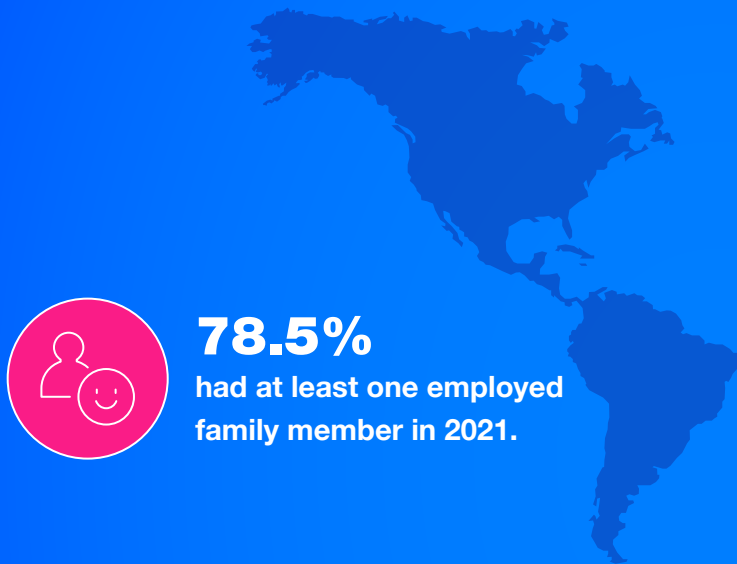


FACTS AND FIGURES

FAMILIES IN THE WORKFORCE



78.5%
had at least one employed family member in 2021.



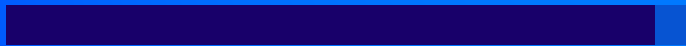
There are **83.2 million families** in the United States.

The Proportion of Families With an Unemployed Person:

White:
6% of families



Black:
10.3% of families



Asian:
7.7% of families



Hispanic:
10.1% of families



0%

11%



5.5%
of married couple families had an unemployed member



9.8%
of women who maintain families are unemployed



10.5%
of men who maintain families are unemployed

Among Families With Unemployed Members:

Families that had at least one member who was working full time in 2021

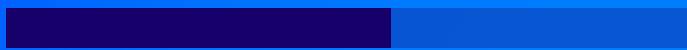
White:

69.9%



Black:

56.7% of Black families



Asian:

75.6% of Asian families



Hispanic:

68.4% of Hispanic families



0% 100%

Families With Children:



32.8 million

families include children under the age of 18



89.1%

at least one parent is employed



96.5%

of households where parents are married have at least one employed parent



In **62.3%**

of households where parents were married, both parents were employed

81.7%

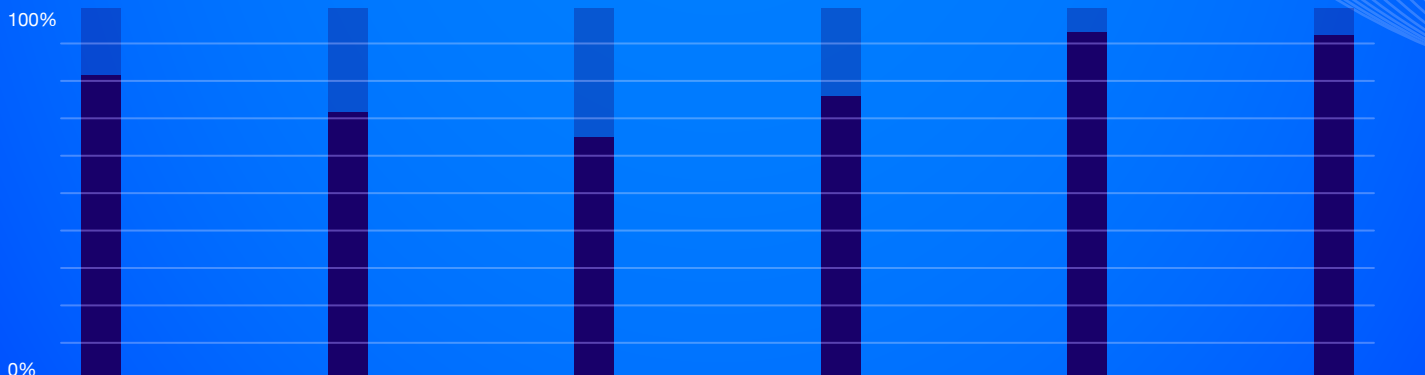
71.2%

65.6%

75.5%

93.9%

91.5%



of fathers who maintain the family are employed

of mothers who maintain the family are employed

of mothers with children under the age of 6 participate in the workforce

of mothers with children aged 6-17 participate

of fathers with children under the age of 6 participate in the workforce

of fathers with children aged 6-17 participate